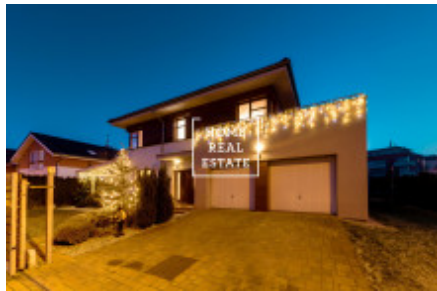


HOME
REAL
ESTATE

Sale house monument / other, 294 m² - Kozáková, Praha 10



Kozáková 175/18, Praha - Pitkovice



The company «Home Real Estate» offers in exclusive representation of the owner for sale a luxury detached family house 6 + 1 with a double garage of 2009 with a total area of 294 m², located in a very desirable and quiet location of Prague 10 - Pitkovice. The two-storey house in Pitkovice is ideal housing for a large family. It stands on a flat plot of 752 m². On the ground floor there is a living room with a kitchen fireplace, from which there is access to the garden and to the amazing summer outdoor kitchen. Furthermore, a room, toilet and 2 garage spaces. Upstairs are 4 spacious rooms with two bathrooms and a dressing room. The rooms have access to the balcony and terrace. A brick family house with the Porotherm system is a guarantee of quality and healthy living. The Porotherm solution meets the highest requirements for both masonry and quality of living. The house project won the prestigious House of the Year and Top House awards. The developer is CENTRAL GROUP, as **Technical equipment**. Wooden eurowindows, wooden floors, pre-window blinds on el. drive, electronic security system MAXI with connection to the central security desk, preparation for a central vacuum cleaner. Heating is central gas, in the main bathroom electric floor heating mats. **Civic amenities**. Directly in the place is the newest kindergarten with a capacity of 112 children and rich civic amenities, including schools and a wide range of services is in neighboring Průhonice and Uhřetěves. The Pitkovice district on the south-eastern edge of the capital city of Prague, close to the Botič - Milíčov Nature Park and the Průhonice Castle Park, which is one of the most important castle parks in the Czech Republic. The park and its plant collections were inscribed on the UNESCO World Heritage List in 2012. In neighboring Čestlice you will find several large multinational retail chains (Makro, Kika, Albert, Bauhaus), the Spektrum shopping center and, for example, car showrooms. Since 2008, there is the largest aqua park in Central Europe, Aquapalace Prague.

- 17 minutes by car to Wenceslas Square (17km)
- 3 minutes walk to the bus stops - lines 213 and 906.
- 10 minutes by bus to the metro station C - Haje.
- 3 minutes by car to Uhřetěves, Průhonice

The fees are CZK 7,500 / month for a family of 4. Land 752 m², built-up area 165 m², internal floor area 236 m², summer terrace with kitchen 27 m², other terraces and balconies 31 m². Are you interested in a tour of the house? Just fill out the form below, we will call you as soon as possible and arrange an inspection date that will suit you.

ID	29519	Offer	Sale
Group	Monument / Other	Furnished	Furnished
Location	Kozáková 18, Praha 22, Česko	Ownership	Personal
Usable area	294 m ²	City	Prague
District	Praha 10	City district	Pitkovice
Status	Realized		