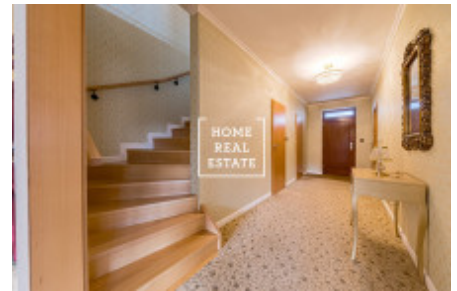
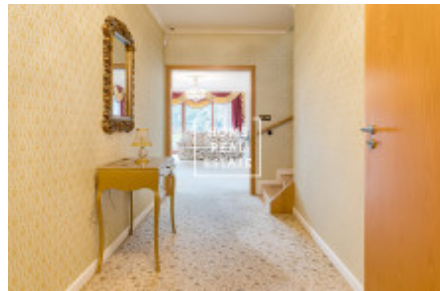




Sale house monument / other, 259 m2 - Na Zeleném Vršku



HomeRealEstate, on behalf of the owner, offers for sale an interesting family house with a total area of 259 m² with a plot of 1353 m², situated in a new residential area of the village of Velké Popovice near Prague. A detached two-storey house with a layout of 5 + kk is located at the end of the dead-end street Na Zeleném Vršku. The project was designed by the Swiss Architecture Office and subsequently implemented by the developer Proctus in 2010-2012. The project brings residents very quiet and private living in 19 family houses in the immediate vicinity of the forest and the Velkopopovicko nature reserve and at the same time in the immediate vicinity of the city. Water connected to the project from infant springs, which are used in the production of the legendary Velkopopovický Kozel beer. The land is slightly sloping and thanks to its area and distance from other neighbors allows further construction. Disposition of the house: On the ground floor there is a living room with dining area and fireplace, kitchen and access to the terrace. There is also an entrance hall, cloakroom, pantry and toilet. On the first floor there is a master bedroom with ensuite bathroom, another 3 rooms (of which 2 with access to the balcony), a gallery and a bathroom. Large storage space in the attic of the house. In the basement there is a double garage (you can also park on 2 outdoor parking spaces), utility room, bathroom and cellar. The house has above-standard equipment: central vacuum cleaner, pre-window blinds with remote control on all windows, camera system, alarm, fire alarm. The heating is underfloor and performed by a Viessman heat pump. In the center of the village (4 minutes by car) you will find all the necessary civic amenities: food, restaurant, post office, kindergarten and primary school, general practitioner and pharmacy. There are also plenty of sports facilities: tennis courts, ice rink, golf course. The picturesque landscape of the village offers many ponds, forests, nature park Velkopopovicko. Good transport accessibility to Prague: you can get to the Chodov metro station in just 15 minutes by car. Trains and suburban buses from Stránčice also provide connections to the capital. The purchase price does not include furniture, but in case of interest in the purchase of all Italian furniture, the price is negotiable. The great advantage of this house is the possibility of converting the basement into a living area and also creating a very nice room under the roof (which would increase the area by about 120 m²). The house has everything a modern family needs for life, so we definitely recommend a tour. Total price: 10,200,000 CZK, including real estate agency commission For more information or to arrange a tour, please contact the broker or fill out the form below.

ID	29516	Offer	Sale
Group	Monument / Other	Furnished	Furnished
Location	Na Zeleném Vršku 183, Brtnice, 251 69 Velké Popovice, Česko	Ownership	Personal
Usable area	259 m ²	City	Prague
Status	Realized		